

Penny Purse (Reticule)

R = ring (all picots same 1/4" size)

Ch = chain

SR = Split Ring

SC = Split Chain/Bridge

Lock stitch chain = chain with first stitch flipped, second stitch not flipped.

(7x) = 7 repeats

Ss = shoe string (tie over hand knot to switch shuttle positions)

2 shuttles

Side A

Start with large center ring.

~R 5 - (7x) 5 [A]

First round

SR 3 - 3 - 4 / 3 - 3 - 4 [B]

*Ch 5 - 5 - 5

R 4 - 3 + (to previous ring) 3 + (to center ring) 3 - 3 - 4*

Repeat from * to * 7x.

SC 5 - 5 / 5

Second round

SR 4 - 3 - 3 / 5 - 5 [C] (~ for side B join at base of this R on side A)

**Ch 5 - 5 - 5

R 3 - 3 + (to previous ring) 4 + (to next chain picot of previous round) 4 - 3 - 3**

Repeat from ** to ** 10x.

Ch 5 - 5 - 5 (~for side B join at base of ring D on side A)

SR 3 - 3 + 4 + 5 / 5 [D]

SR 5 + (to next chain picot of previous round) 5 / 5 - 5 (3x)

SR 5 + 5 + (to first ring on round) 5 / 5 ~ [E]

Flap

SR 3 - 3 - 4 / 3 - 3 - 4 [F] (ss)

***Ch 5 - 5

R 4 - 3 - 3 + 3 - 3 - 4***

Repeat from *** to *** 3x. (ss after last ring)

Ch 3 - 3 - 3 - 3 - 3

R 4 - 3 - 3 + 3 - 3 - 4

Ch 3 - 3 - 3 - 3 - 3 - (small picot) 2

R 4 - 3 - 3 + 3 - 3 - 4

R from Ch thread 2 + 3 - 3 - 3 - 3 - 3 - 3 - (small picot) 2

Ch 2 + 3 - 3 - 3 - 3 - 3

R 4 - 3 - 3 + 3 - 3 - 4

Ch 3 - 3 - 3 - 3 - 3

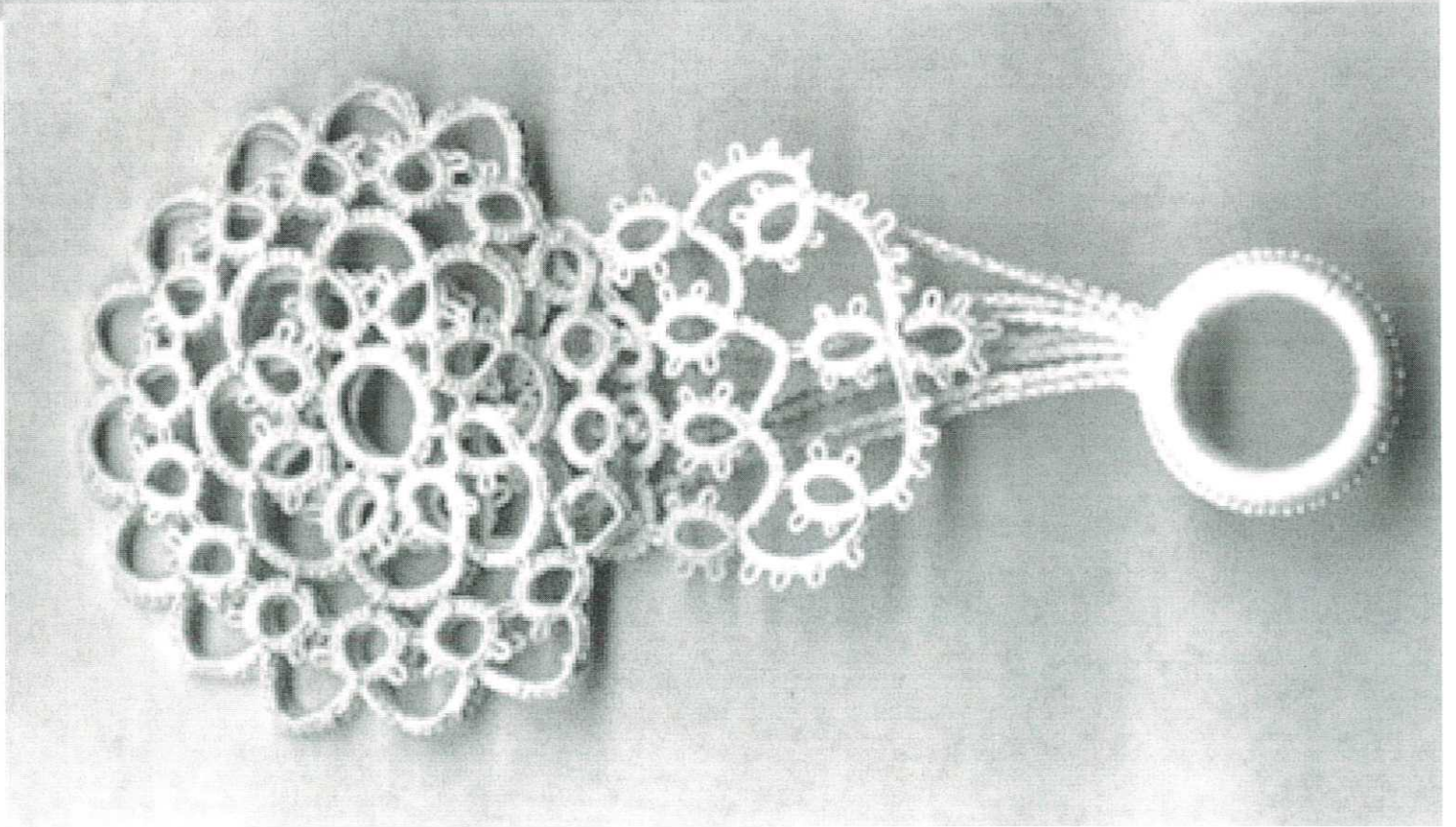
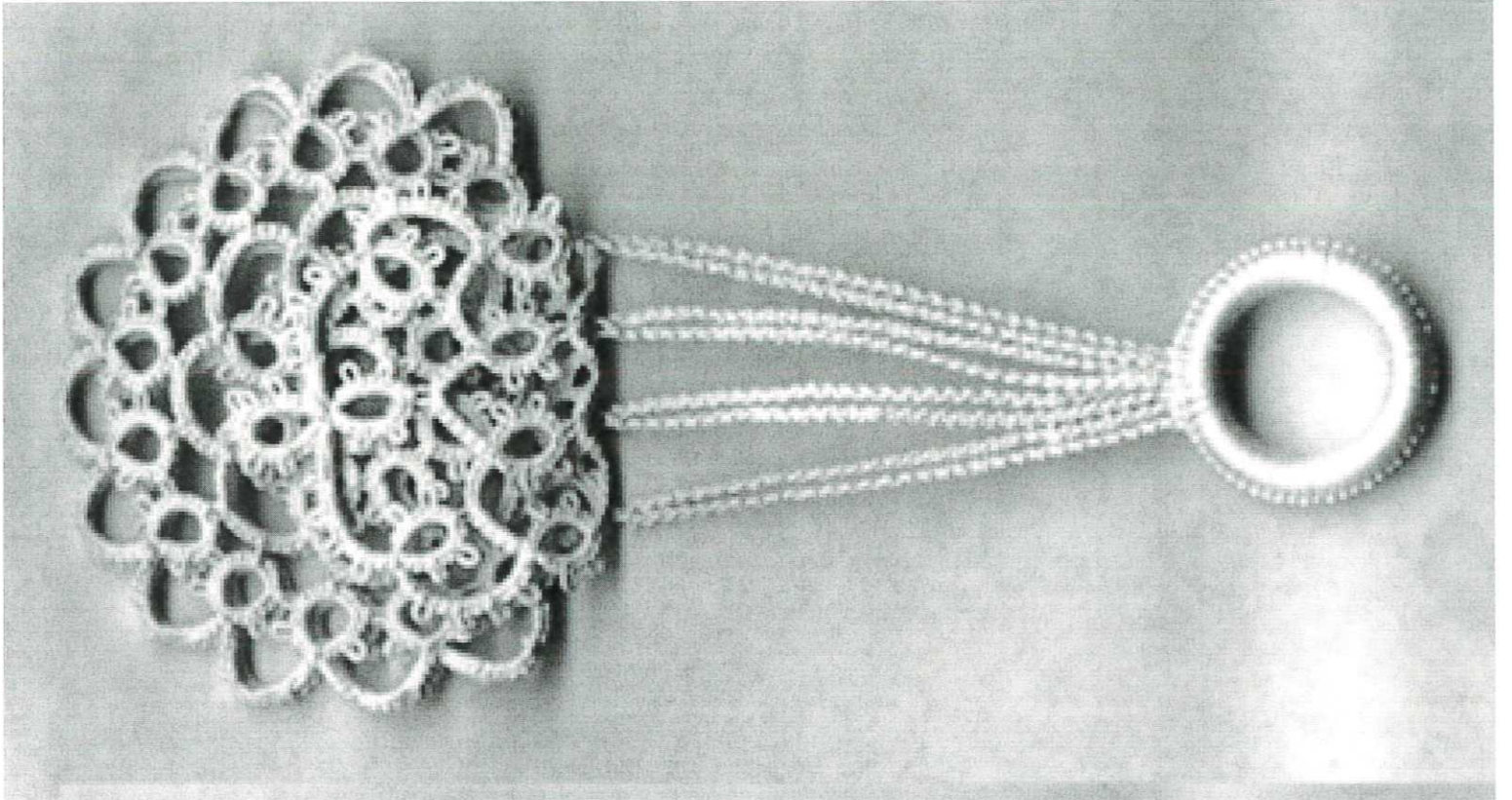
End

Side B repeat between ~ to ~, joining all outside chain picots of previous side.

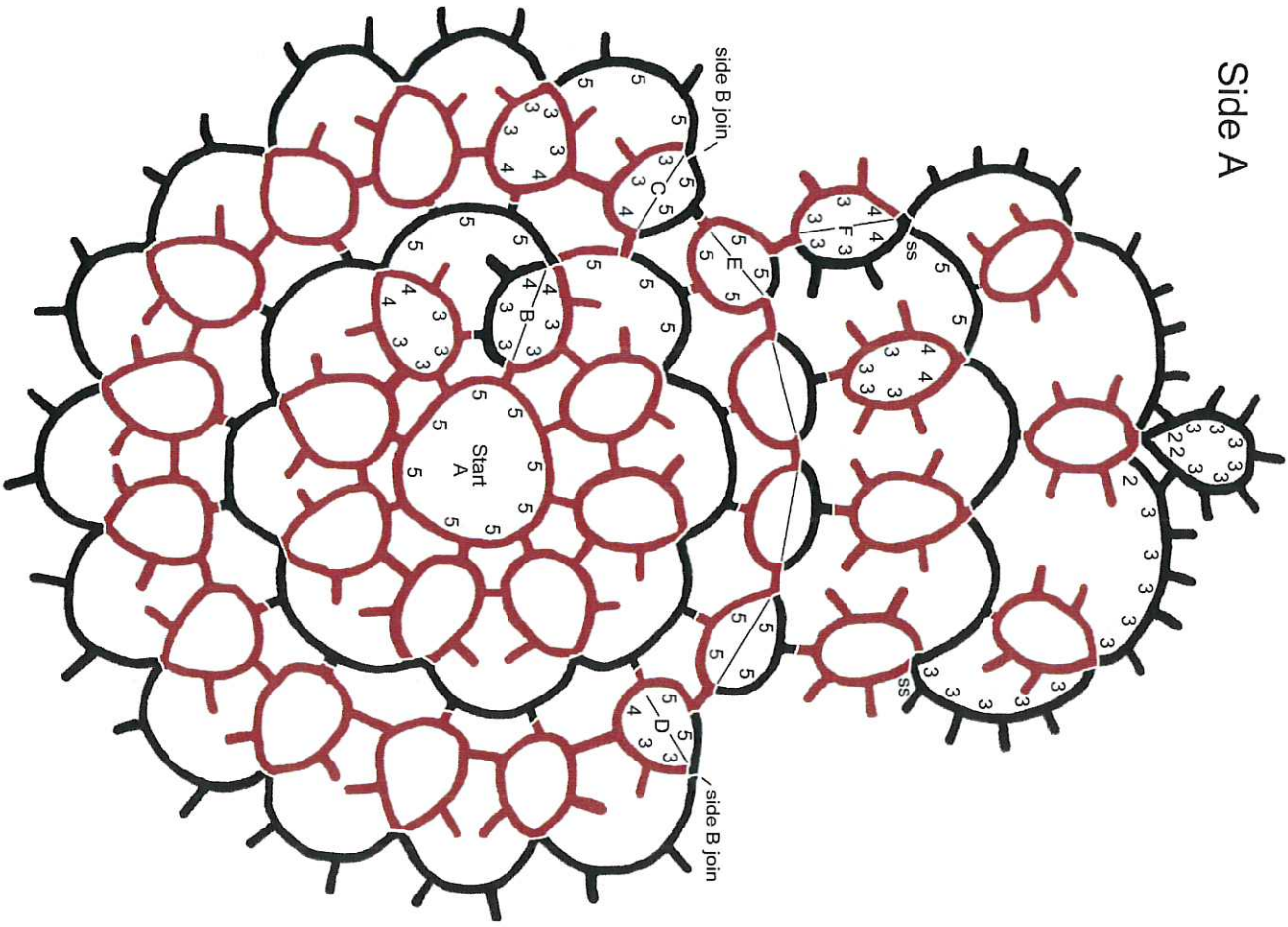
Purse Ring

Connect thread to plastic ring as in diagram A (using 2 shuttles or shuttle and ball with continuous thread)

Lock stitch chain 30 + 30, join to side B split ring picot through the outside split rings of side A, using reverse stitch (bridging stitch) join to plastic ring. Repeat to join all four split rings of side B. Then continue bridging stitch to cover plastic ring.



Side A



Join all chain picots to same on side A
Side B

